

# DERBY CASH

Horse Racing

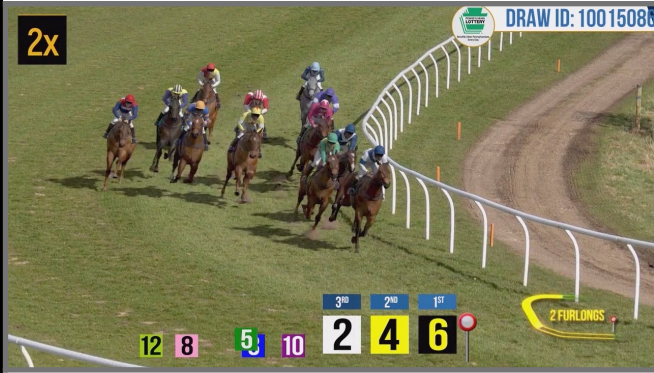
## Quick Reference Guide

### Introduction to Derby Cash

**Minimum Cost:** \$1 **Drawings:** Races (drawings) occur every four minutes (approximately 298 drawings per day)

**Sales Cutoff:** Two seconds before the drawing

Welcome to Derby Cash, an exciting virtual horse racing Pennsylvania Lottery game that will have players on the edge of their seats! Each Derby Cash race consists of 12 horses, all having different odds of winning. Horses are numbered and ranked from 1 - 12 by their odds to win in each race, with horse No. 1 having the greatest odds to win. A new race occurs every four minutes.



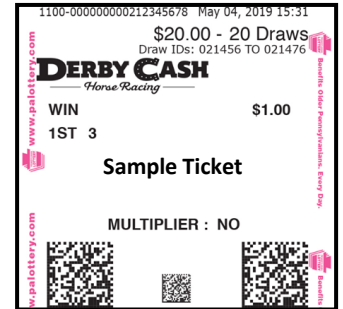
#### How to Play:

In Derby Cash, players may choose their own numbers or use the Quick Pick option to have the computer randomly select some or all of their horse numbers (excluding "Wheel" play types). Players may enter numbers manually or fill out a Derby Cash playslip. Players choose the amount to play for each race, number of consecutive races to play, play type, horse number(s), and Multiplier option. The Multiplier option triples the original ticket cost and multiplies winnings by a randomly drawn number (2X, 3X, 4X, 5X, or 10X).

#### How to Win:

Players win by matching their horse numbers and chosen play type with the horse numbers coming in first, second, third, and/or fourth place. PA Lottery retailers may pay prizes up to \$2,500 on site. Prizes over \$600 require a Claim Form and all prizes expire one year from the drawing date. Once printed, retailers cannot cancel Derby Cash tickets.

**Note:** Derby Cash races are virtual and do not depict any real life horse racing events.



### Selling Derby Cash on the WAVE 8 Terminal

Retailers may insert a completed Derby Cash playslip into the document scanner or manually enter numbers and game options for a player.

#### Manual Entry Method:

1. Select the **[Derby Cash]** icon on the **KENO XP SPORTS** tab.
2. Select the desired **PLAY TYPE**.
3. Select the desired **PLAY AMOUNT** by using the **[+]** or **[-]** buttons, or by selecting the middle icon displaying the dollar amount to choose a different amount not shown.
4. Select the desired **NUMBER OF RACES** by using the **[+]** or **[-]** buttons, or by selecting the middle icon displaying the number of races to manually enter the desired number of races.
5. If a player wants to add the **DERBY CASH MULTIPLIER** option, select **[YES]**.
6. Select **[PICK YOUR OWN NUMBERS]** to enter a player's desired numbers or select **[BUY NOW]** to use the Quick Pick option automatically. Select **[ADD TO CART]** to utilize the Shopping Cart feature, to which you may continue to add any additional desired items.



**Note:** Derby Cash tickets *cannot* be produced using the **REPLAY** feature.

V. 11.6.2023

## Play Types and Prizes

### Derby Cash Play Types:

Play Type	Description
<b>WIN</b>	Selected horse finishes first.
<b>PLACE</b>	Selected horse finishes first or second.
<b>SHOW</b>	Selected horse finishes first, second, or third.
<b>QUINELLA</b>	Selected horses finish first and second in <b>ANY</b> order.
<b>EXACTA</b>	Selected horses finish first and second in <b>EXACT</b> order.
<b>TRIFECTA</b>	Selected horses finish first, second, and third in <b>EXACT</b> order.
<b>SUPERFECTA</b>	Selected horses finish first, second, third, and fourth in <b>EXACT</b> order.
<b>BOX</b> (EXACTA, TRIFECTA, and SUPERFECTA only)	Selecting a BOX play type purchases all possible combinations of selected play type.
<b>WHEEL</b> (EXACTA, TRIFECTA, and SUPERFECTA only)	Automatically occurs when selecting more than one horse for first, second, third, and/or fourth place.

### Sample Derby Cash Playslip



### Derby Cash Prizes:

Play Type	Minimum Prize (\$1 Play)	Maximum Prize (\$1 Play)
<b>WIN</b>	\$3	\$30
<b>PLACE</b>	\$1.50	\$15
<b>SHOW</b>	\$1.25	\$10
<b>QUINELLA</b>	\$7	\$600
<b>EXACTA</b>	\$14	\$1,346
<b>TRIFECTA</b>	\$60	\$38,622
<b>SUPERFECTA</b>	\$309	\$802,469

\*Derby Cash prizes shown above are for a \$1 play and exclude BOX and WHEEL play types. Prize amounts vary between the minimum and maximum depending on the odds of the selected horse(s) and the outcome of the race.

For complete prize details and Liability Capping Requirements, visit [www.palottery.com](http://www.palottery.com).

## PlayCentral Terminals

### Selling Derby Cash on Self-Service Terminals:

- From the main screen, select the [KENO/XPRESS SPORTS/WebCash] icon or insert a playslip.  
**Note:** If using a playslip, the terminal adds the ticket to the Shopping Cart if not enough funds are available to cover the cost.
- Select the [DERBY CASH] icon.
- Players choose the play type, amount to play for each race, number of consecutive races, and multiplier option.
- The terminal automatically selects Quick Pick horse numbers by default. To choose numbers manually, select the [PICK YOUR OWN NUMBERS] icon. Select [FINISH] when complete.
- If the terminal has enough funds available in the balance, the [BUY NOW] icon will display. Select [BUY NOW] to print the ticket or select [ADD TO CART] to add the ticket to the Shopping Cart.
- To access tickets in the Shopping Cart, touch the cart icon near the top left of the screen. The tickets appear along with the cost.
- Insert cash, vouchers, and/or scan winning tickets to add to the available balance. Select [BUY NOW] once the terminal has enough funds available. To use a cashless method of payment, select [USE GIFT CARD] or [USE DEBIT] and follow the on-screen instructions.

